



EC
ITB*
GLOBAL



The UK's Experience & Collaboration with NIOSH

Tristan Kemp

Head of Commercial

Engineering Construction Industry Training Board

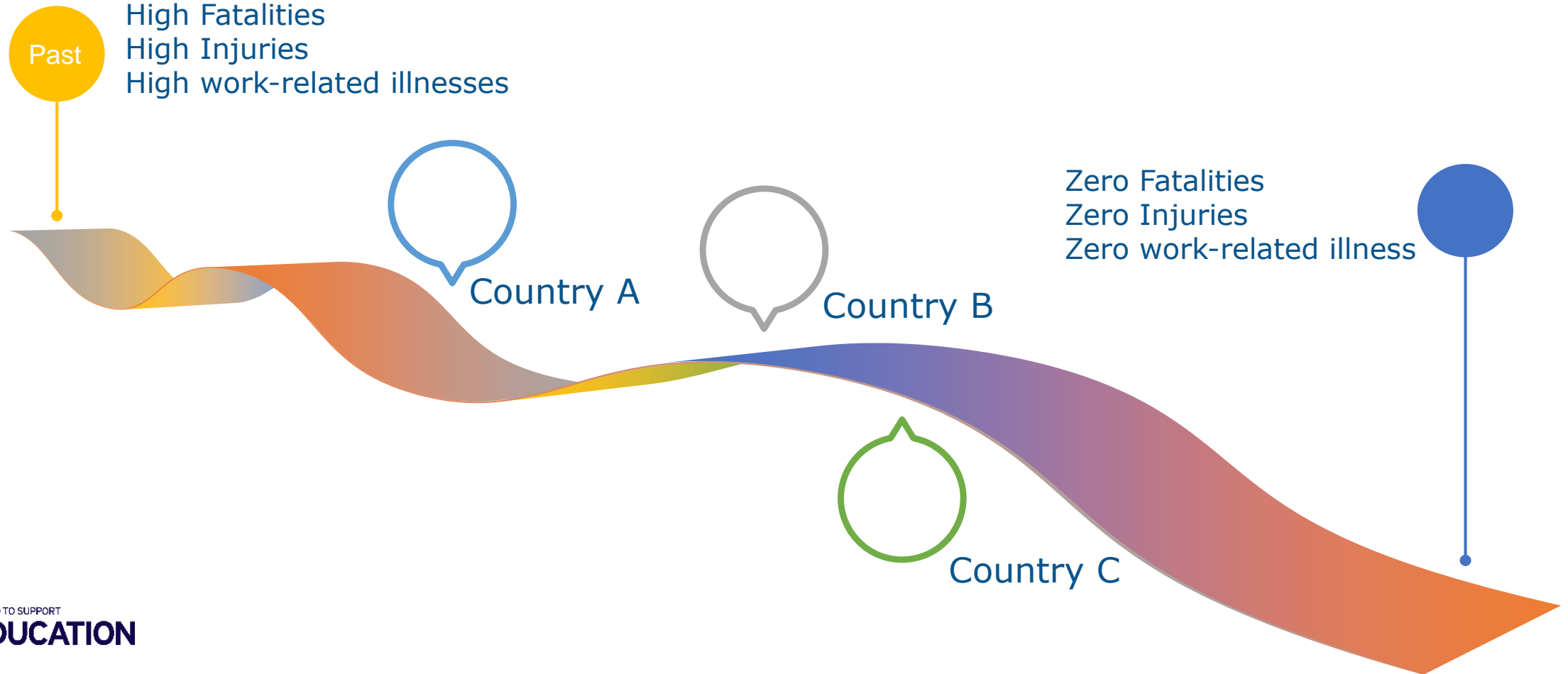




EC
ITB 
GLOBAL

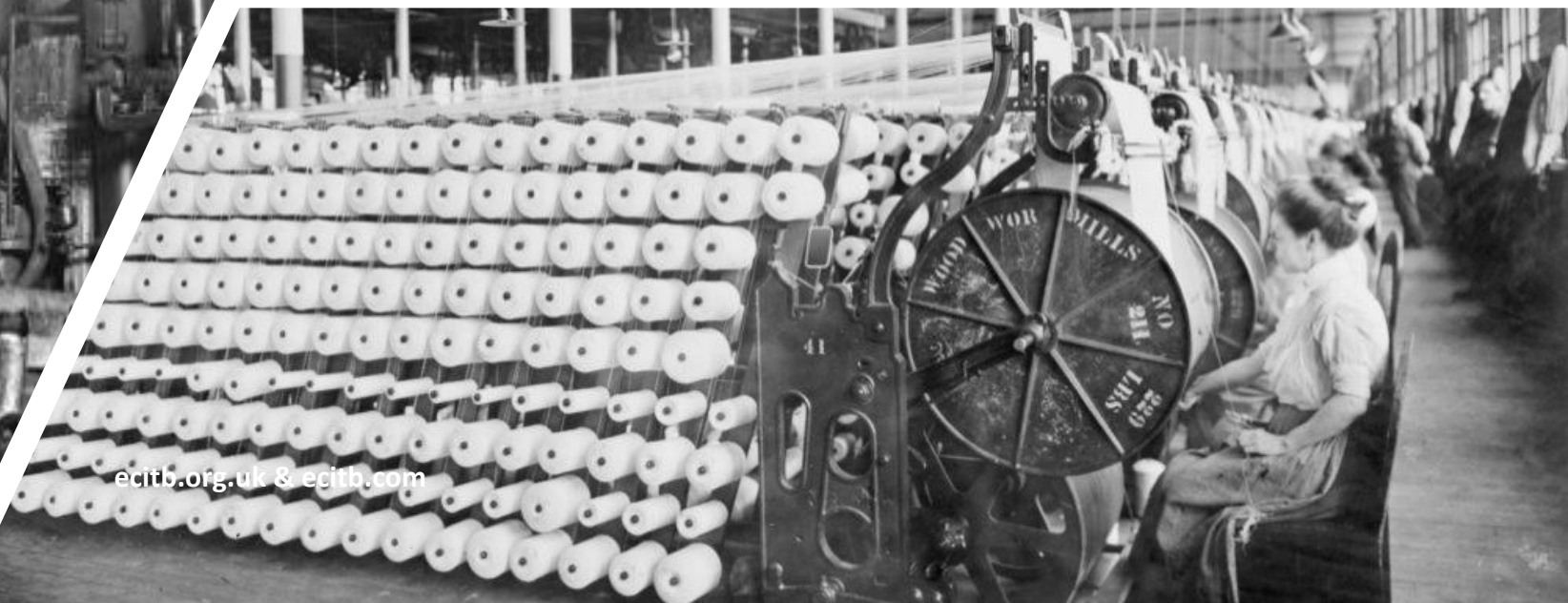


Timeline



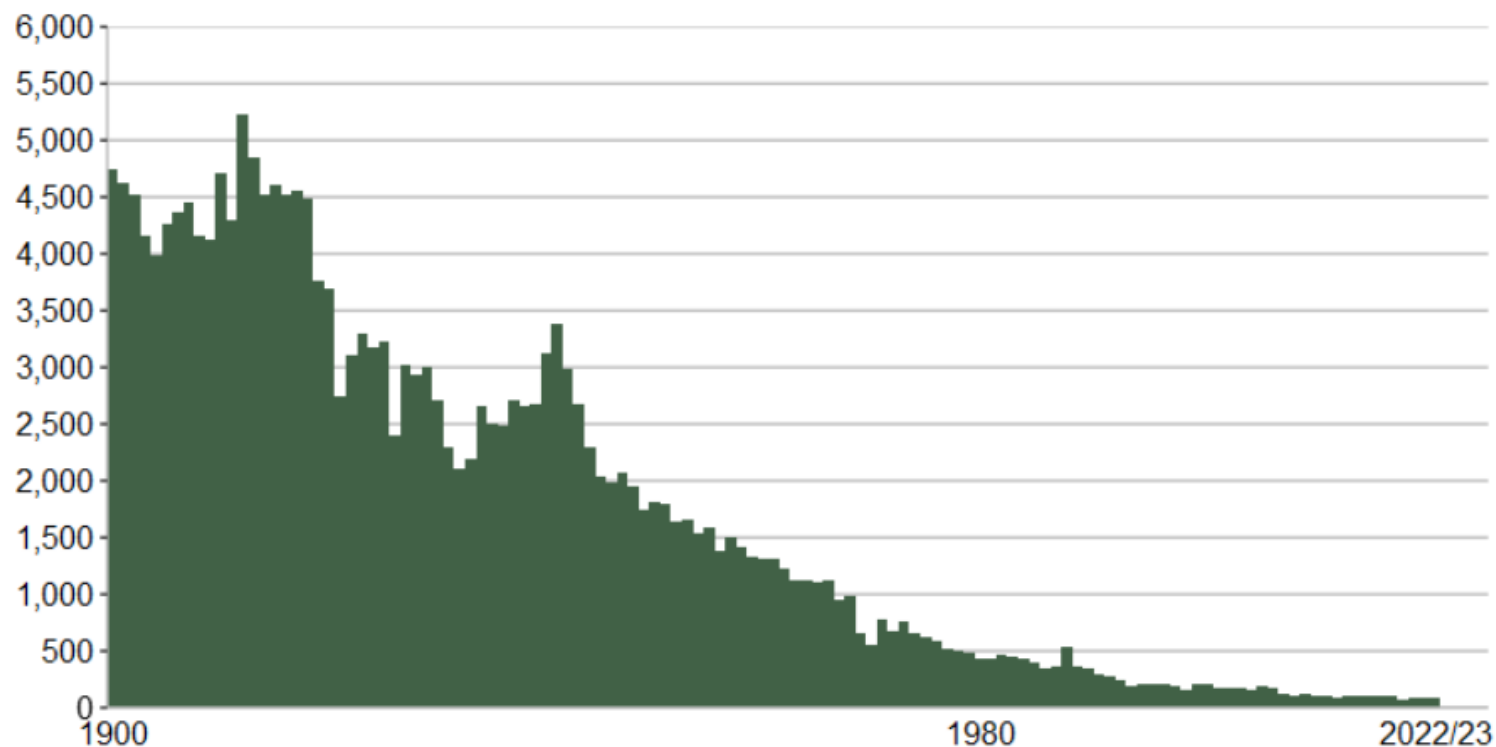
- The UK's Health and Safety Experience
- Health and Safety Culture
- ECITB's involvement with NIOSH







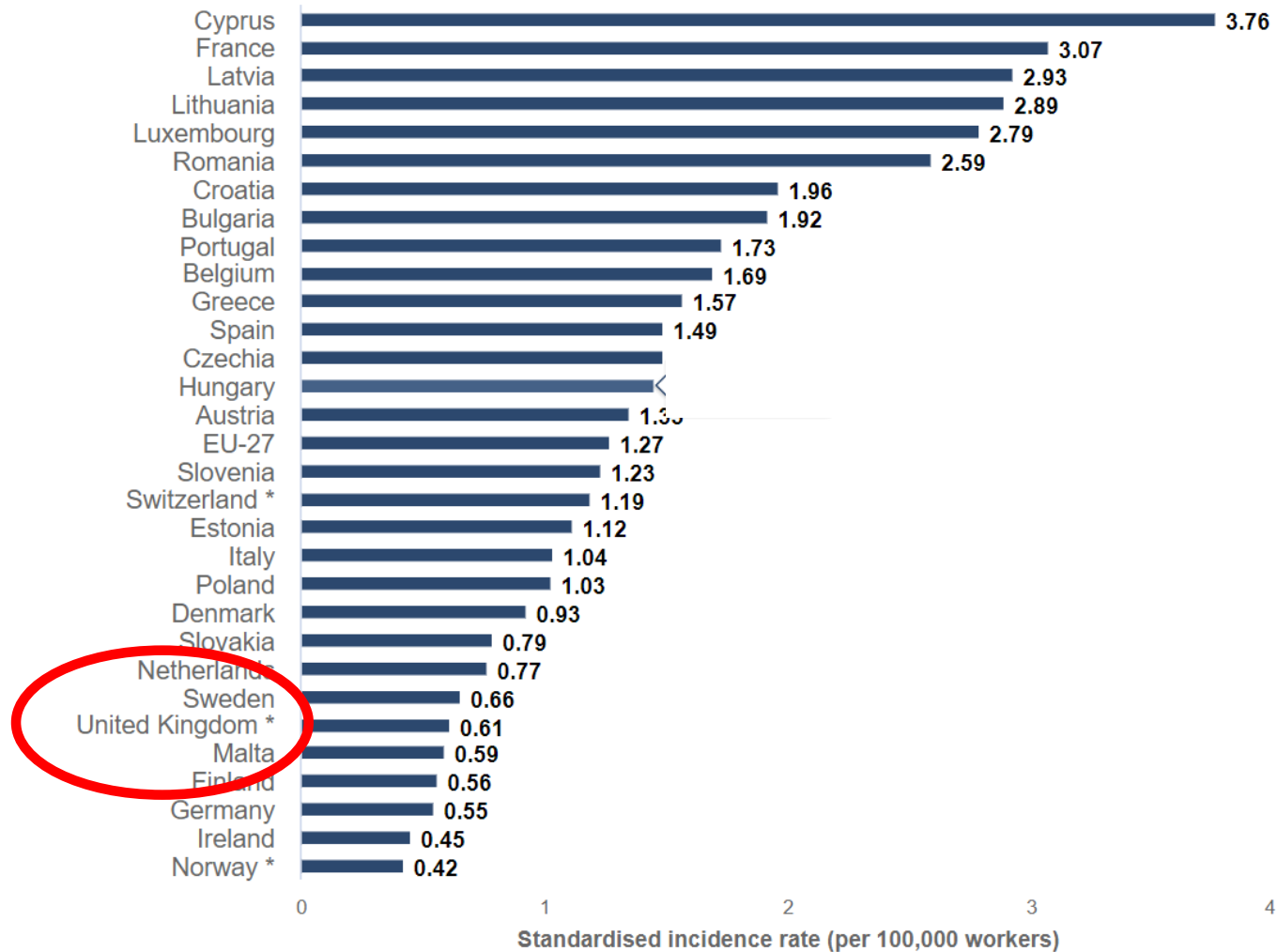
Number of fatal injuries to employees in UK 1900-2022/23



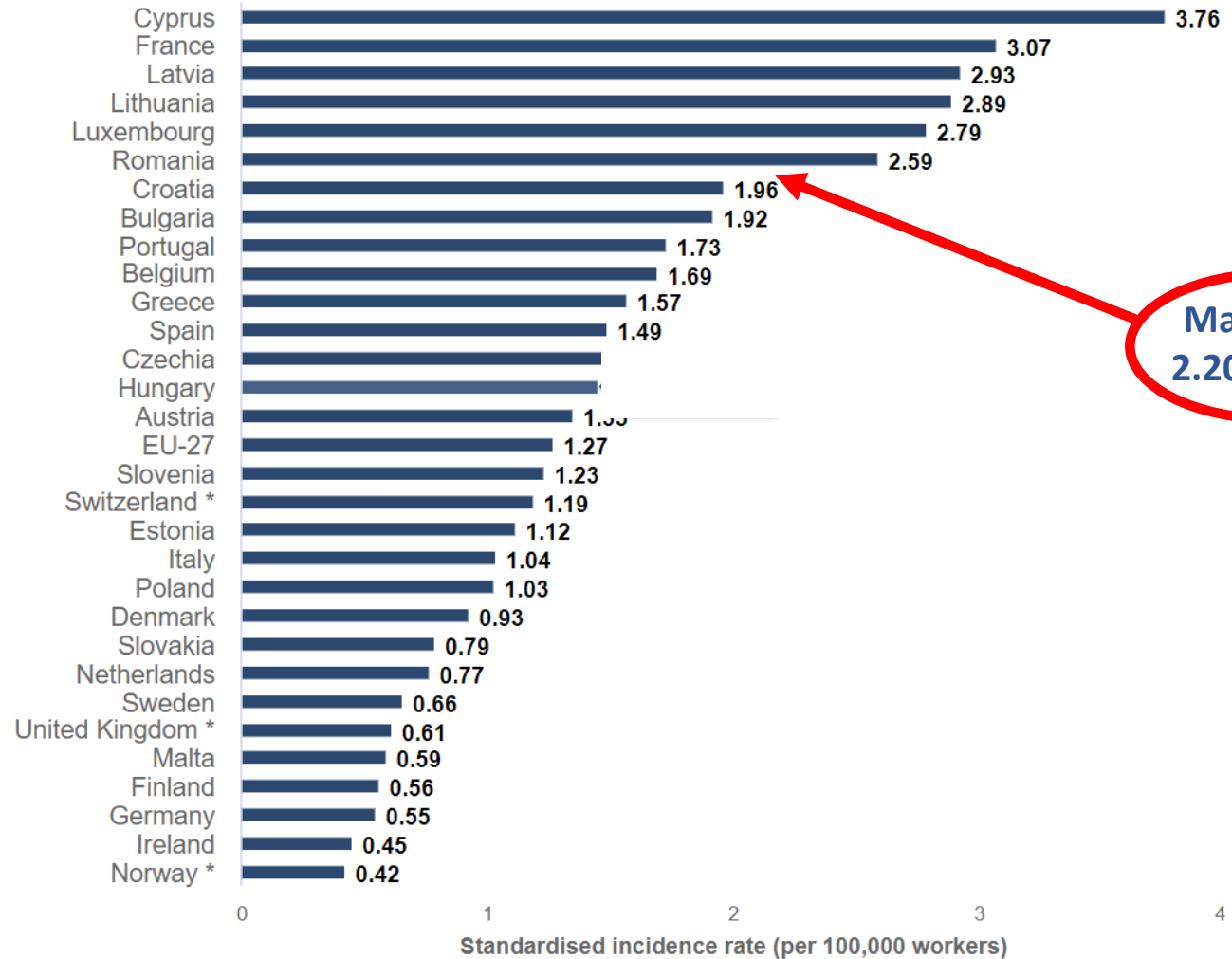
Data for 2019/20 to 2021/22 includes the effects of the coronavirus pandemic.

Source: RIDDOR and earlier reporting legislation

Standardised incidence rates (per 100,000 workers) of work-related fatal injuries for 2018



Standardised incidence rates (per 100,000 workers) of work-related fatal injuries for 2018



Malaysia –
2.20 in 2022

Still plenty for us to do...2022/23

37.5 million working
population

1.8 million suffering with work-
related illness

**135 workers
killed**

**67 million
population**

*875,000 suffering work-related
stress, anxiety and depression*

561,000
injuries at work

473,000 workers with work-
related musco-skeletal
disorder

**£20.7 billion
estimated cost of
work-place injuries**

*35.2 million working days
lost through work-place
illness and injury*



EC
ITB 
GLOBAL



The ECITB



ECITB is an Executive Board led, non-departmental, not-for-profit public body in charge of its own activities and budget, answerable to the British Govt's DfE and Charity Commission



Oil & Gas



Nuclear



Water Treatment



Power



Pharmaceuticals



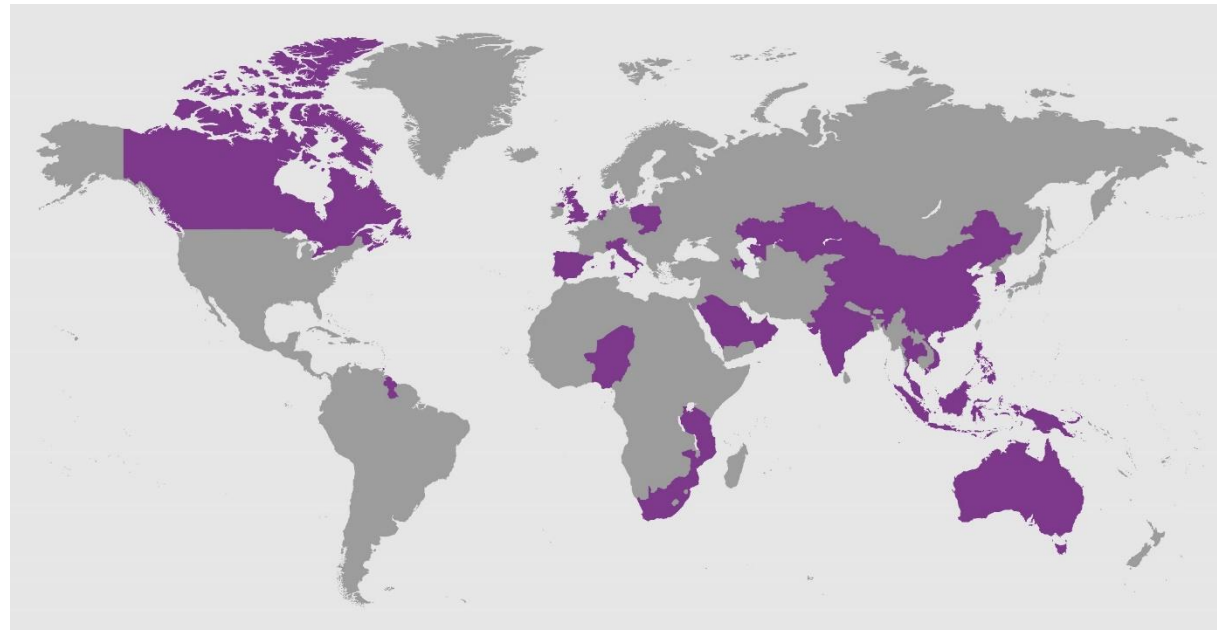
Chemicals



Renewables



Food & Drink



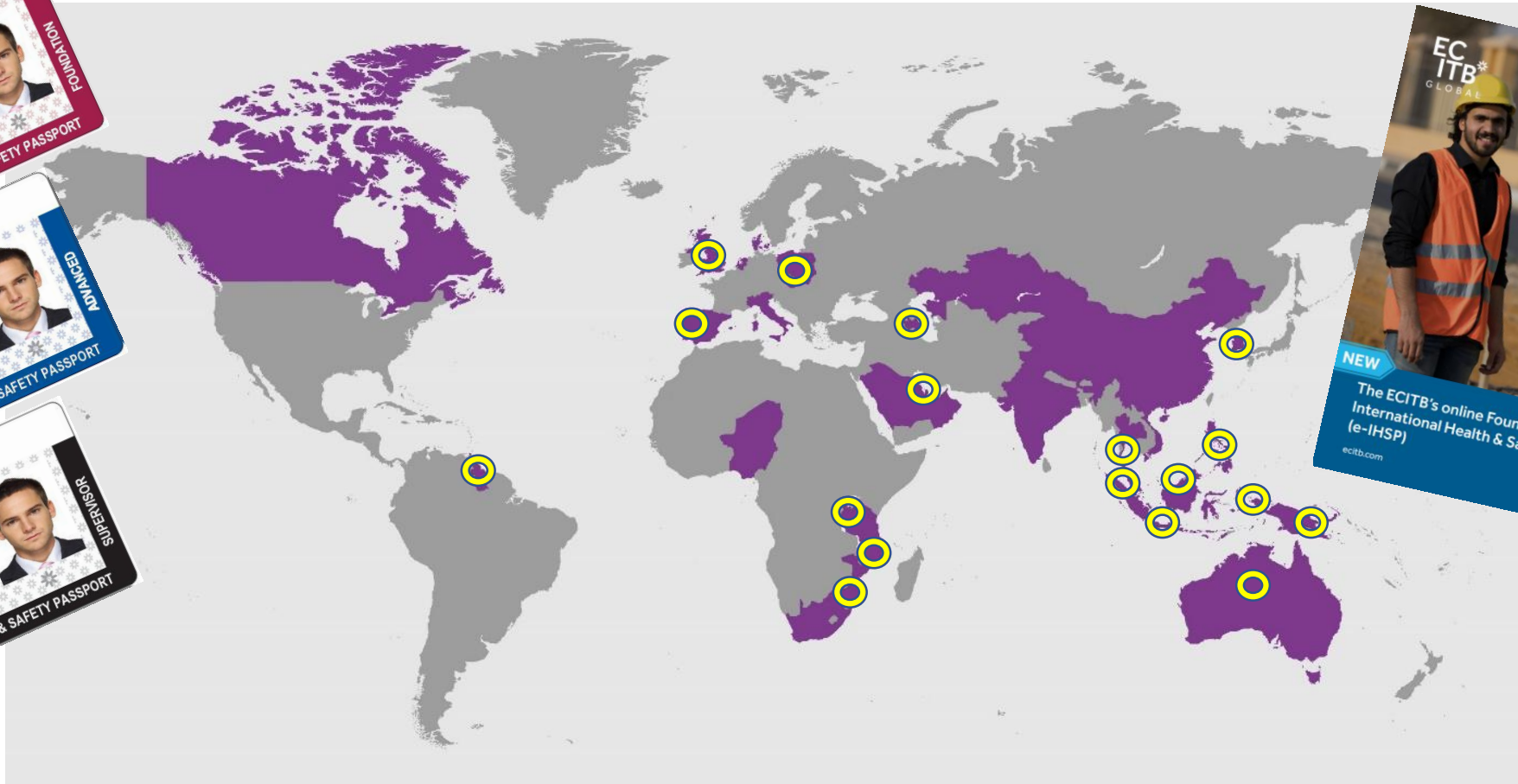


CCNSG

Client Contractor
National Safety Group



International Health and Safety Passport (IHSP)



Collaboration with NIOSH



Benefits

- ✓ Internationally recognised and audited scheme
- ✓ Commonality of standards across your workforce – assurity for Managers
- ✓ Helps employers meet responsibilities
- ✓ Transferable - simplifies onboarding between sites and sectors
- ✓ 1.2 million cards issued in UK and internationally
- ✓ Helps reduce accidents and lost time incidents
- ✓ Displays a visible commitment to workforce
- ✓ Attracts workers and increasingly discerning customers



EC
ITB*
GLOBAL